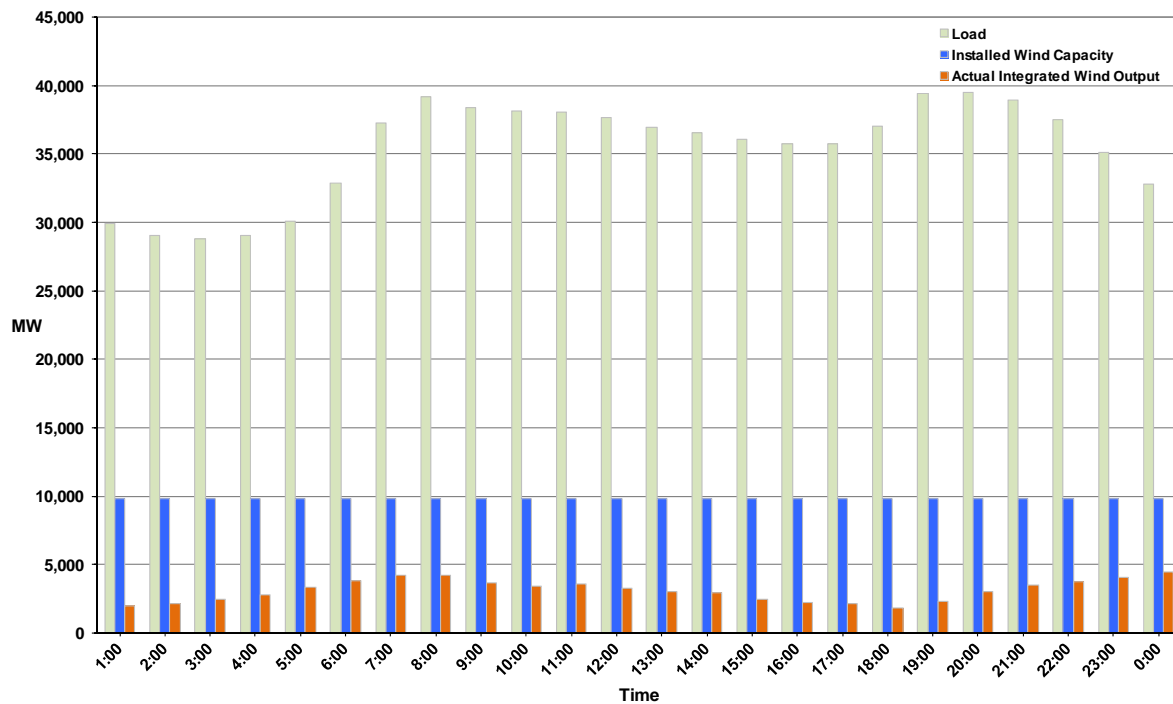




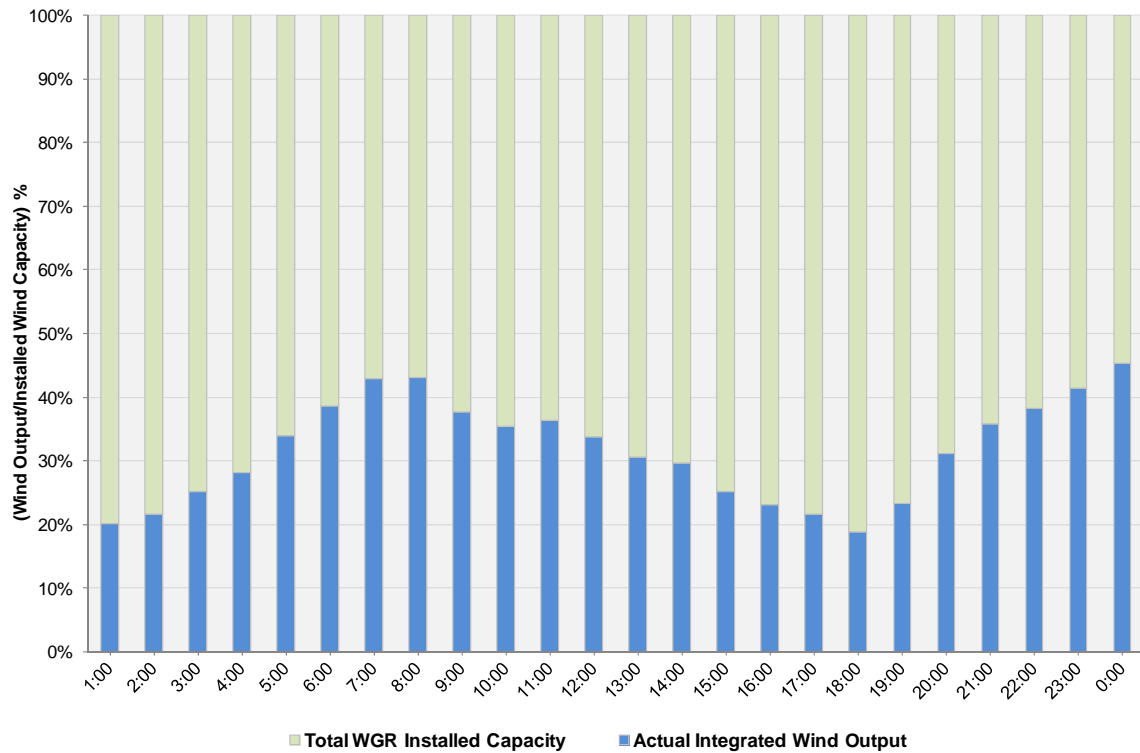
## ERCOT Grid Operations Wind Integration Report: 01/10/12

Peak Load	<b>39,469MW</b>
Load Peak Hour (HE)	<b>20</b>
Wind over Peak	<b>3,048 MW</b>
Wind Record 10/07/11	<b>7,400 MW</b>
Max Wind Value	<b>4,620 MW</b>
Wind Peak Time	<b>23:54</b>
Wind Integration %	<b>14.44%</b>

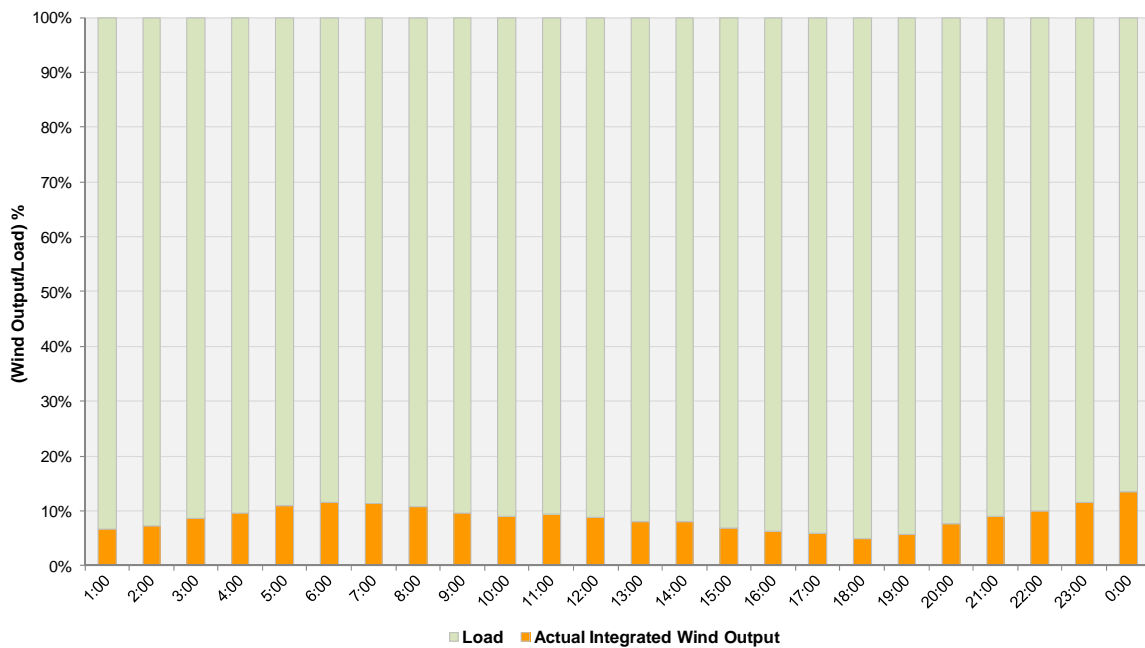
**Hourly Average Actual Load vs. Actual Wind Output  
01-10-2012**



**Actual Wind Output as a Percentage of the Total Installed Wind Capacity**  
**01-10-2012**



**Actual Wind Output as a Percentage of the ERCOT Load**  
**01-10-2012**



ERCOT Load vs. Actual Wind Output 1/3/2012 - 1/10/2012

